



**HUNTERS**<sup>®</sup>  
HERE TO GET *you* THERE



2



2



1



HUNTERS<sup>®</sup>

C

# Davidson Close, Hythe, Southampton

Asking Price £275,000



This charming two-bedroom apartment is perfectly positioned in the picturesque waterside village of Hythe, renowned for its relaxed coastal atmosphere and strong sense of community. Offering generous living spaces and a comfortable layout, this delightful home combines practicality with scenic surroundings.

Upon entering, you are welcomed by a well-proportioned double bedroom, complete with direct access to the balcony, it is an ideal space for guests or family members to enjoy both privacy and fresh coastal air. Adjacent to this is a charming family bathroom, thoughtfully designed to serve both residents and visitors alike.

The heart of the home is the impressive open-plan kitchen and living area, beautifully arranged to create a bright and sociable environment. The kitchen flows seamlessly into the lounge space, making it perfect for both everyday living and entertaining. Double French doors open directly onto the balcony, where you can take in the stunning water views and enjoy the peaceful surroundings.

Continuing through the property, you will find the superb master bedroom, featuring built-in storage and a well-proportioned en-suite bathroom, providing a comfortable and private retreat.

With its enviable waterside setting, spacious layout, and inviting atmosphere, this lovely apartment presents a wonderful opportunity to enjoy coastal living at its best.

## LEASEHOLD INFORMATION:

Lease Term Remaining: 100 Years Approx.

Service/Maintenance Charge: To Be Advised

Ground Rent: £250 per annum

## COUNCIL TAX :

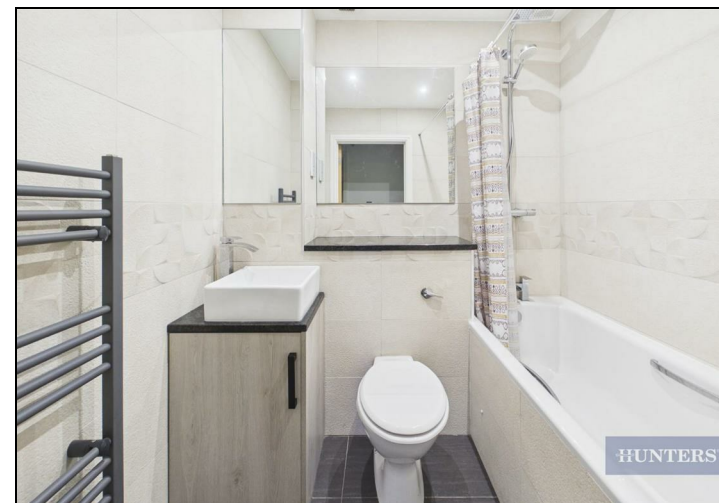
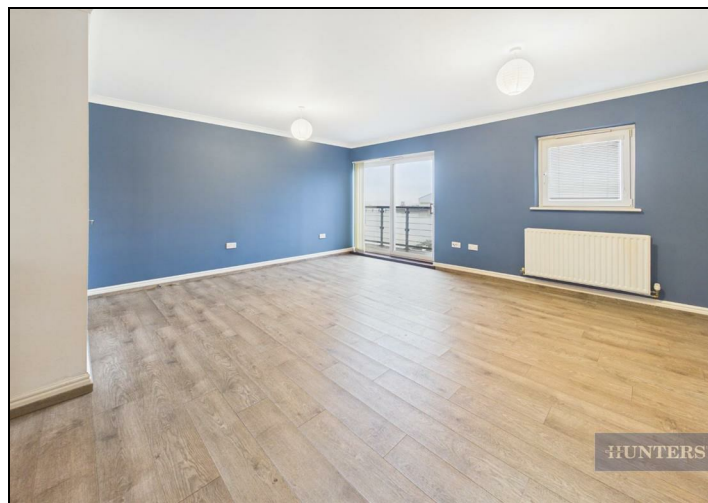
New Forest District Council, Band C, Charge Payable £2341.33 p.a. 2025/2026





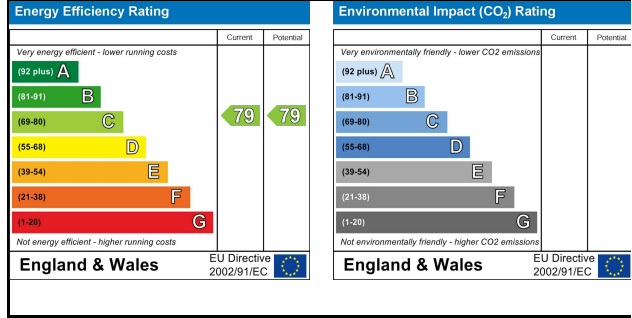
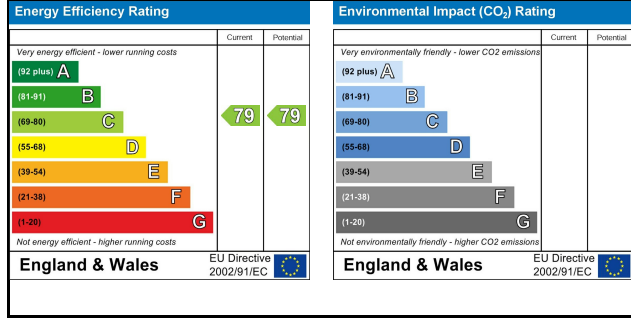
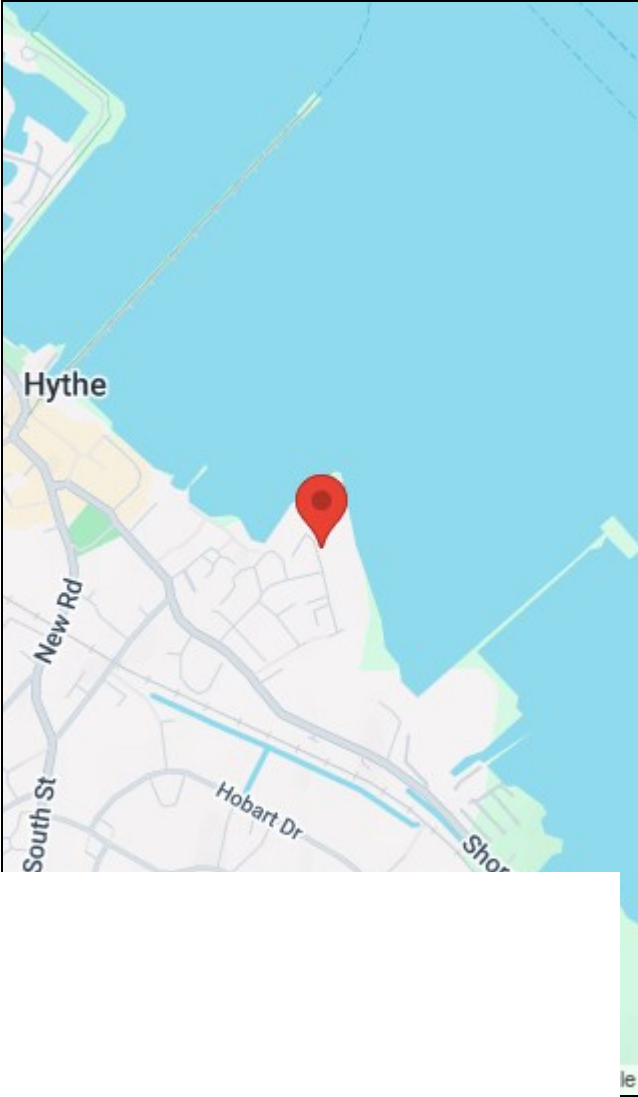
## KEY FEATURES

- Two-bedroom flat
- Allocated parking in car park
  - Built in storage
- Open-plan living area
  - Balcony
  - En-suite
- Waterfront views
- Full family bathroom
- Double French doors









38 Bedford Place, Southampton, Hampshire, SO15 2DG | 02380 987 720  
[southampton@hunters.com](mailto:southampton@hunters.com) | [www.hunters.com](http://www.hunters.com)



This Hunters business is independently owned and operated by Clegg Properties Ltd | Registered Address 27 Westfield Road, Lymington, Hampshire, England, SO41 3PZ | Registered Number: 06421594 England and Wales | VAT No: 188 0548 76 with the written consent of Hunters Franchising Limited.